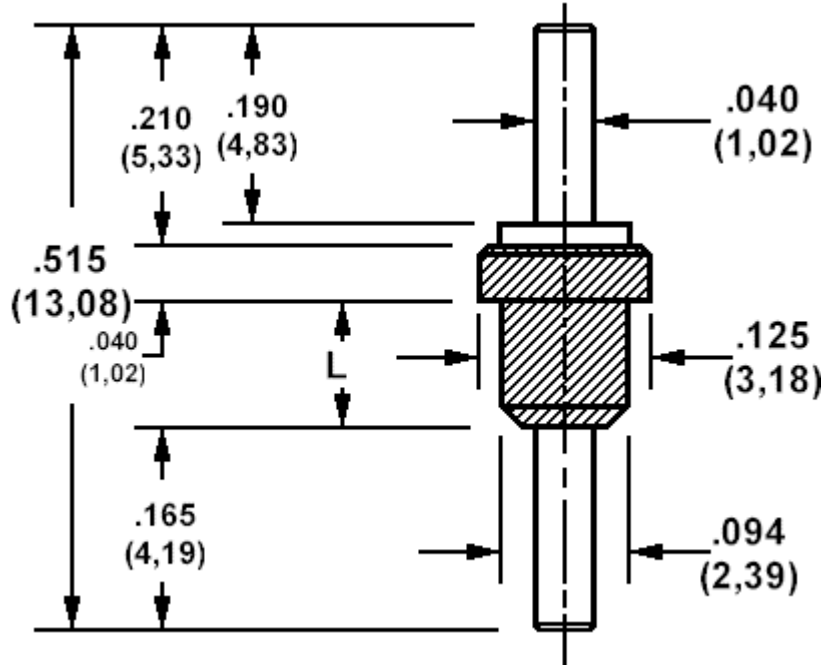


## 571-4282 Insulated solder terminal, Pin type, Feed thru

Recommended mounting hole .083 (2,11)



### How to order code

**571-4282-XX-YY-19**

Basic Part No (XX = Panel thickness, YY = plating finish. See tables for options)

Basic Part No.		L	Panel Thickness (XX)
571-4282	-01	.100 (2,54)	.031 (0,79) to .062 (1,59)

Component	Material	Finish (YY)	
		-01	-05
Terminal	Brass	Silver	Electro Solder
Insulator	Teflon - white		

Additional Specifications	
Flashover VRMS at Sea Level	1500
Capacitance (pF)	0.7

Teflon is a registered trademark of Dupont